



PRIDE  
FOUNDATION  
AUSTRALIA  
LGBTQIA+  
REFUGEE  
SPONSORSHIP  
SUB-FUND  
A CASE FOR  
SUPPORT

# LGBTQIA+ refugees and asylum seekers

## THE NEED



There are 70 countries that criminalise LGBTQI+ people, some of which have the death penalty. In addition to legislative criminalisation and persecution, LGBTQI+ people are impacted by patriarchy, societal norms and familial pressures that impede the possibility to live their lives to the fullest potential and to be safe and free.



LGBTQI+ people experience persecution, family rejection, violence, loss of employment and education, and many other human rights abuses.



Therefore, LGBTQI+ people seek asylum in countries known to be LGBTQI+ inclusive - including Australia.



BUT... The journey to find safety is dangerous for LGBTQI+ people, disclosing sexuality or gender identity, or being born with variations in sex characteristics can be particularly dangerous in detention with high rates of assault and harassment, and resulting PTSD for many.



Asylum claims for LGBTQI+ people can be very difficult due to fears of discrimination, mistranslation, and difficulty proving LGBTQI+ status. Disclosure can also result in retribution against or from family members in the country of origin.



See a range of stories in a video from Forcibly Displaced People Network (FDPN)<sup>2</sup>.

# Sponsorship

## A SOLUTION

Community Sponsorship is a proven method to enable safe settlement through arrangement of a humanitarian visa in a transition country, safe passage to the host country, and local community support for at least the first year. This bypasses the hugely traumatic and insecure asylum-seeking process. Ideally, it also enables more refugees to come here outside of Government imposed quotas.

This scheme can also draw attention to the need for Australia to increase its humanitarian intake and to specifically include people fleeing because of diverse sexuality, sex characteristics and gender identity.

Pride Foundation Australia is building LGBTIQ+ specific capacity for this through working with mainstream organisations including:



Community  
Refugee  
Sponsorship  
Australia

COMMUNITY REFUGEE  
SPONSORSHIP AUSTRALIA<sup>3</sup>

**AMNESTY  
INTERNATIONAL**

AMNESTY AUSTRALIA MY NEW  
NEIGHBOUR CAMPAIGN<sup>4</sup>





Models such as those in Canada and New Zealand are enhanced through LGBTIQ+-specific initiatives that can meet needs more effectively such as:



#### RAINBOW PATH IN NZ<sup>5</sup>

Legal and community support which is peer-led



#### RAINBOW RAILROAD IN CANADA<sup>6</sup>

they have already received 4,318 requests for help in 2021



#### RAINBOW REFUGEE IN VANCOUVER CANADA

Including donor circles to support individual refugees on arrival for the first year

# The Sub-Fund

## OUR ACTION

PFA is supporting the community sponsorship movement through enabling a specific LGBTIQ+ focus. We have established a specific purpose sub-fund to enable individual donors to actively participate by donating. This sub-fund was established in 2021 by Dennis Altman and Ruth McNair as part of PFA, ABN 85 116 997 427.

All donations to the sub-fund are tax deductible. This is a 'flow through' sub-fund, established so that granting out the donated funds will happen during at least the next 5 years.

Examples of grants from the sub-fund will include:

### 1. SPONSORSHIP

Sponsoring LGBTIQ+ refugees fleeing persecution to come to Australia on a humanitarian visa or supporting people already in Australia and seeking asylum. Sponsoring includes:



INTERNATIONAL LEGAL  
COSTS AND PROBONO  
LAWYER LINKS



ACCOMMODATION  
FIRST YEAR



THE HUMANITARIAN  
VISA COST



EDUCATION AND  
TRAINING



TRAVEL COSTS  
INCLUDING  
AIRFARES



HEALTH AND  
WELLBEING





## 2. GROWING SUPPORT

Enhancing the work of Australian LGBTIQ+ refugee peer-led groups:

### FUNDING FOR STAFF, SUCH AS:



TRAINERS



PEER LEADERS



COORDINATION  
OF PEER LEADER  
NETWORKS

### OTHER COSTS:



ADVERTISING



SUPPORTING PEER-  
LED SUPPORT  
GROUP LEADERS



OPERATIONAL

# We can't do this alone

## OUR PARTNERS

Our knowledge in this area is significant, but there are many groups that have real expertise and lived experience, and we want to work with them in partnership. Groups we are already collaborating with include:

### FORCIBLY DISPLACED PEOPLES NETWORK

LGBTIQ+ refugee-led peak in Australia



### PEER-LED LGBTIQ REFUGEE SUPPORT GROUPS

Many Coloured Sky, part of Three For All Foundation.

All of the peer-led LGBTIQ refugee support groups developing around Australia.



### LEGAL

Refugee Legal (Melb), RACS (Sydney), LGBTIQ Legal Service (Melb)



**Refugee Legal:**  
Defending the rights of refugees.



RAINBOW REFUGEE  
SPONSORSHIP SUB-FUND  
A CASE FOR SUPPORT

## CRSA AND AMNESTY AUSTRALIA

Encouraging a focus on LGBTIQ+ as a group at risk.

**AMNESTY  
INTERNATIONAL**



Community  
Refugee  
Sponsorship  
Australia

## PHILANTHROPY

Sidney Myer Fund, Australian  
Communities Foundation



*Sidney Myer*

SIDNEY MYER FUND



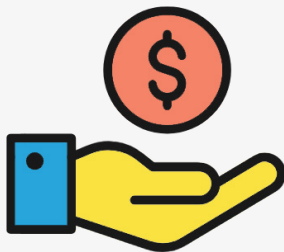


# Sub-Fund Donors

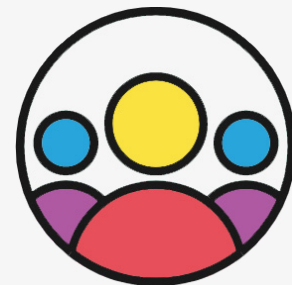
## OUR ROLE

To build the financial and people resources of the LGBTIQ+ refugee sponsorship sub-fund.

Your participation might involve:



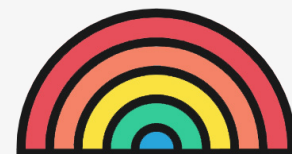
**GIVING A TAX-DEDUCTIBLE  
DONATION ANNUALLY IN AMOUNTS  
FROM \$1,000 TO \$20,000 OR MORE,  
WHICH CAN BE PAID IN MULTIPLE  
INSTALMENTS AS NEEDED.**



**PARTICIPATION ON A MANAGEMENT  
COMMITTEE TO MAKE  
RECOMMENDATIONS TO PFA BOARD  
ON HOW TO SUPPORT LGBTIQ  
REFUGEE SPONSORSHIP**



**DEVELOPMENT OF YOUR OWN LOCAL  
GIVING CIRCLES TO SPONSOR AND  
SUPPORT AN INDIVIDUAL IN YOUR  
LOCAL COMMUNITY**



**ADDING YOUR KNOWLEDGE AND  
CONNECTIONS TO BUILD OUR  
PARTNERSHIPS**



# How much we need to raise

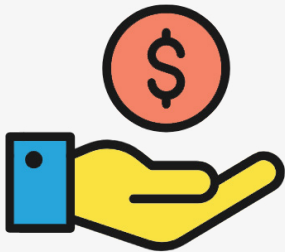
## OUR TARGET

We have raised over \$50,000 in the first year. We aim to continue raising at least \$50,000 per year.

# Evaluation

## WHAT SUCCESS LOOKS LIKE

Success will be measured by:



The existence of a vibrant group of people in different cities who care passionately about this work and consistently raise \$50,000 per annum.



A number of LGBTIQ+ refugees have been identified, sponsored and supported to settle in Australia.



The capacity of peer-led support for LGBTIQ+ refugees and asylum seekers has expanded to multiple regions of Australia, with appropriately supported and trained peer leaders at their helm.



**WE'RE LOOKING FORWARD TO HEARING FROM YOU  
SOON. TOGETHER, WE CAN BUILD A BETTER FUTURE  
FOR RAINBOW REFUGEES IN AUSTRALIA.**

Ruth McNair  
ruth@pridefoundation.org.au  
www.pridefoundation.org.au

<sup>1</sup> <http://bit.ly/cbr-statement>

<sup>2</sup> <https://www.myauslearning.org.au/lgbtiq-settlement/>

<sup>3</sup> <https://refugeesponsorship.org.au/>

<sup>4</sup> <https://www.amnesty.org.au/my-new-neighbour-refugee-campaign-gains-strength/>

<sup>5</sup> <https://www.facebook.com/groups/rainbowpath/?ref=share>

<sup>6</sup> <https://www.rainbowrailroad.org/>